



Fisher BioReagents®

Molecular Biology Grade Ethanol

Catalogue Number		Volume
UK and Ireland	Rest of Europe	
BPE2818-100	BP2818-100	100mL
BPE2818-500	BP2818-500	500mL
BPE2818-4	BP2818-4	4L

Fisher BioReagents Molecular Biology Grade Ethanol (BP2818) is an ultrapure molecular biology grade ethanol used for the purification and precipitation of biomolecules such as nucleic acids and proteins.

It can be used in histology to prepare staining and destaining reagents and for dehydrating tissues prior to embedding.

KEY FEATURES

1. 200 proof, absolute alcohol
2. Molecular Biology Grade Ethanol is tested for DNase, RNase, and Protease to ensure absence of these enzymes
3. Product meets the ACS specifications for Absolute Ethyl Alcohol
4. 0.2 micron filtered
5. Water \leq 0.2%

APPLICATIONS

1. Purification and precipitation of nucleic acids (DNA and RNA) and proteins
2. Preparation of staining and destaining solutions
3. Dehydration of cells and tissues prior to paraffin wax embedding
4. Extraction medium
5. Chromatographic reagent



PRODUCT SPECIFICATIONS

Name of product	Absolute Ethyl Alcohol, Molecular Biology Grade
Product Part Numbers and Package Configurations. In UK and Ireland product codes are prefixed BPE.	BP2818-100, 100mL, amber glass bottle
	BP2818-500, 500mL, amber glass bottle
	BP2818-4, 4L, amber glass bottle
Appearance	Colorless liquid
Infrared Spectrum	Conforms
Purity (Assay)	99.5% by Volume
Impurity (Benzene by GC)	\leq 2ppm
DNase	Pass test
RNase	Pass test
Protease	Pass test
Endotoxin	N/A
Use Test	N/A
ACS Specifications	Meets ACS Specifications
Color (APHA)	10 Maximum
Solubility in Water	Pass test
Acetone, IPA	Pass test
Residue after evaporation	0.001% Maximum
Titration acid	0.0005 meq/g
Titration base	0.0002 meq/g
Substances darkened by sulfuric acid	Pass test
Substances reducing permanganate	Pass test
Water (KF)	\leq 0.2%
Methanol	0.1% Maximum

MOLECULAR BIOLOGY GRADE ETHANOL PRODUCT PERFORMANCE

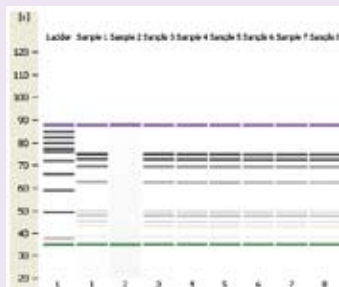
Results have been generated using Agilent Bioanalyzer for DNase and RNase, and protein gel data for protease, to demonstrate the absence of these enzymes in BP2818, Fisher BioReagents Molecular Biology Grade Ethanol.

DNase test for BP2818

Three lots of BP2818 were tested for the absence of DNase.

Gel-like data from Bioanalyzer

Bioanalyzer Lane Identification
 1. Negative control
 2. Positive control, 5 U of DNase
 3 & 4. BP2818, Lot # 1
 5 & 6. BP2818, Lot # 2
 7 & 8. BP2818, Lot # 3



DNA fragments are present in all three lots of Molecular Biology Grade Ethanol as seen in the dark bands shown in Lanes 3 through 8 and matches negative control shown in Lane 1.

For the positive control in Lane 2, DNA is degraded by the presence of DNase and is not present compared to the negative control.

RESULT

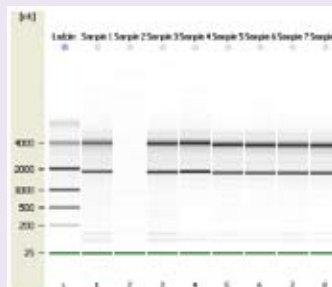
There is no DNase contamination found in any of the three lots of Ethanol and is shown through the presence of DNA.

RNase test for BP2818

Three lots of BP2818 were tested for the absence of RNase.

Gel-like data from Bioanalyzer

Bioanalyzer Lane Identification
 1. Negative control
 2. Positive control, 5 U of RNase
 3 & 4. BP2818, Lot # 1
 5 & 6. BP2818, Lot # 2
 7 & 8. BP2818, Lot # 3



RNA fragments are present in all three lots of Molecular Biology Grade Ethanol (4000 nt and 2000 nt) as seen in the dark bands shown in Lanes 3 through 8 and matches negative control shown in Lane 1.

For the positive control in Lane 2, RNA is degraded by the presence of RNase and is not present compared to the negative control.

RESULT

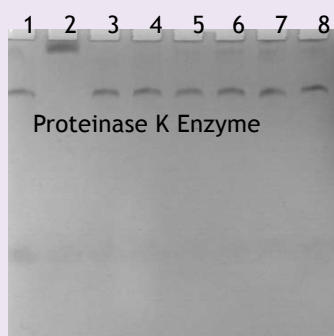
There is no RNase contamination found in any of the three lots of Ethanol and is shown through the presence of RNA.

Protease test for BP2818, Fisher BioReagents Molecular Biology Grade Ethanol

Three lots of BP2818 were tested for the absence of protease.

12.5% EZ-Run Protein Gel, BP7712-100 150V for 60 min.

Bioanalyzer Lane Identification
 1. Negative control
 2. Positive control, 5 U of Proteinase K enzyme
 3 & 4. BP2818, Lot # 1
 5 & 6. BP2818, Lot # 2
 7 & 8. BP2818, Lot # 3



BSA Protein
 BSA protein fragments are present in all three lots of Molecular Biology Grade Ethanol as seen in the dark bands shown in Lanes 3 through 8 and matches negative control shown in Lane 1.

For the positive control in Lane 2, BSA is degraded by the Proteinase K enzyme and is not present compared to the negative control.

RESULT

There is no protease contamination found in any of the three lots of Ethanol and is shown through the presence of BSA protein.



United Kingdom
 Fisher Scientific UK
 Bishop Meadow Road
 Loughborough
 Leicestershire LE11 5RG
 +44(0)1509 231166
 +44(0)1509 231893
 fsuk.sales@thermofisher.com
 www.fisher.co.uk

Ireland
 Fisher Scientific Ireland
 Suite 3 Plaza 212
 Blanchardstown Corporate
 Park 2
 Ballycoolin
 Dublin 15
 Tel: +353 01 885 5854
 Fax: +353 01 899 1855
 fsie.sales@thermofisher.com
 www.ie.fishersci.com

Sweden
 Fisher Scientific
 Box 9193
 400 94 Göteborg
 Tel: +46 31 - 352 32 00
 Fax: +46 31 - 352 32 50
 fisher.se@thermofisher.com
 www.fishersci.se

Denmark
 Fisher Scientific A/S
 Industrivej 3
 DK-3550 Slangerup
 Tel: +45 70 27 99 20
 Fax: +45 70 27 99 29
 kundservice@thermofisher.com
 www.fishersci.dk

Norway
 Fisher Scientific
 Frøysjaveien 33E
 0884 Oslo
 Tel: +47 22 95 59 59
 Fax: +47 22 95 59 40
 fisher.no@thermofisher.com
 www.fishersci.no

Finland
 Fisher Scientific Oy
 Ratastie 2
 FI-01620 Vantaa
 +358 802 76 237
 +358 802 76 235
 fisher.fi@thermofisher.com
 www.fishersci.fi