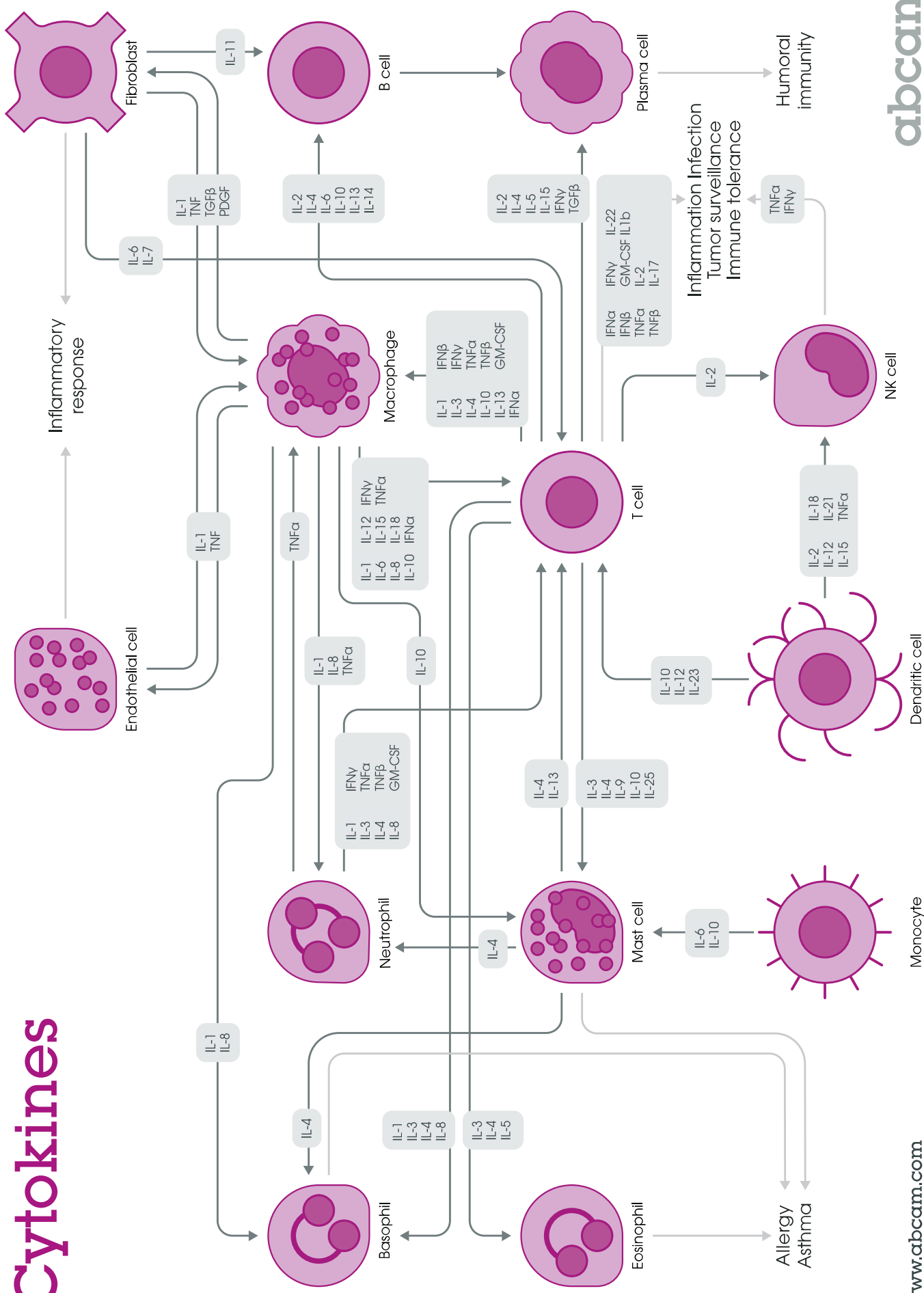
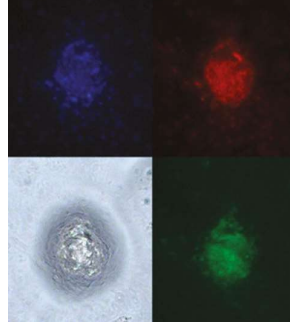


Cytokines



Product	Expression host	Species	Applications tested	Product code	Antibody
Artemin protein	E.coli	Hu	FuncS, SDS-PAGE	ab50124	●
BDNF protein	E.coli	Hu	CellAct, Other, SDS-PAGE, WB	ab9794	●
BMP2 protein	E.coli	Hu	CellAct, SDS-PAGE	ab50099	●
EGF protein (Active)	E.coli	Hu	CellAct, SDS-PAGE	ab9697	●
FGF basic protein (Active)	E.coli	Hu	CellAct, SDS-PAGE	ab9596	●
Recombinant human Fh3 ligand/Fh3L protein	E.coli	Hu	FuncS, HPLC, SDS-PAGE	ab237554	●
G-CSF protein	HEK 293 cells	Hu	FuncS, SDS-PAGE	ab167700	●
GM-CSF pProtein	E.coli	Ms	FuncS, SDS-PAGE	ab9742	●
IGF1 protein	E.coli	Hu	FuncS, SDS-PAGE	ab9573	●
IGF2 protein	E.coli	Hu	FuncS, SDS-PAGE	ab9575	●
IL1 beta protein (Human)	E.coli	Hu	FuncS, SDS-PAGE	ab9617	●
IL2 protein	E.coli	Hu	FuncS, SDS-PAGE	ab9619	●
IL2 Receptor alpha protein (Fc Chimera Active)	HEK 293 cells	Hu	SDS-PAGE	ab84071	●
IL5 protein (Active)	E.coli	Hu	FuncS, SDS-PAGE	ab207986	●
IL6 protein (Active)	E.coli	Hu	FuncS, Neur, SDS-PAGE	ab9627	●
IL8 protein	E.coli	Hu	CellAct, FuncS, SDS-PAGE	ab49839	●
IL12 p40 protein	CHO	Hu	SDS-PAGE	ab9993	●
IL13 protein (Active)	HEK 293 cells	Ms	FuncS, HPLC, MS, SDS-PAGE	ab270080	●
IL15 protein (Active)	HEK 293 cells	Hu	FRET, HPLC, MS, SDS-PAGE	ab259403	●
IL17A protein (Active)	E.coli	Hu	FuncS, SDS-PAGE	ab256041	●
IL-18 protein	Yeast	Ck	SDS-PAGE, Functional Studies	ab87525	●
IL-21 protein	E.coli	Ms	SDS-PAGE, Functional Studies	ab256054	●
Interferon alpha 2 protein	E.coli	Hu	FuncS, HPLC, SDS-PAGE	ab187225	●
Interferon beta protein (Active)	CHO	Hu	FuncS, SDS-PAGE	ab71475	●
Interferon gamma protein	E.coli	Hu	FuncS, SDS-PAGE	ab9659	●
Lepin protein	E.coli	Rat	FuncS, SDS-PAGE	ab646	●
LIF protein	E.coli	Ms	FuncS, SDS-PAGE	ab269188	●
M-CSF protein	E.coli	Hu	FuncS, SDS-PAGE, WB	ab9694	●
Macrophage Inflammatory Protein 1 alpha / CCL3	E.coli	Hu	FuncS, SDS-PAGE	ab268887	●
Namog Protein 1 alpha / CCL3	E.coli	Hu	SDS-PAGE	ab50053	●
Noggin protein (Active)	E.coli	Hu	FuncS, SDS-PAGE, WB	ab73756	●
PDGF BB protein (Active)	E.coli	Hu	FuncS, SDS-PAGE, WB	ab9706	●
SCF Protein	E.coli	Ms	FuncS, SDS-PAGE	ab106309	●
SDF1 alpha protein	E.coli	Hu	FuncS, SDS-PAGE	ab9798	●
TGF alpha protein	E.coli	Hu	FuncS, SDS-PAGE	ab9887	●
TGF beta 1 protein (Active)	CHO	Hu	FuncS, SDS-PAGE	ab50038	●
TGF beta 2 protein (Active)	HEK 293 cells	Hu	FuncS, HPLC, SDS-PAGE, WB	ab84070	●
TNF alpha protein (His tag)	E.coli	Hu	SDS-PAGE, WB	ab55237	●
VEGF 165A protein	E.coli	Hu	FuncS, SDS-PAGE	ab56620	●
VEGF protein	E.coli	Hu	CellAct, CellDiff, FuncS, SDS-PAGE	ab9571	●
Vitronectin Protein	EBNA293	Hu	FuncS, WB	ab54116	●
Wnt3a protein (Active)	Cell Culture	Ms	CellAct, CellDiff, SDS-PAGE	ab81484	●

Featured proteins



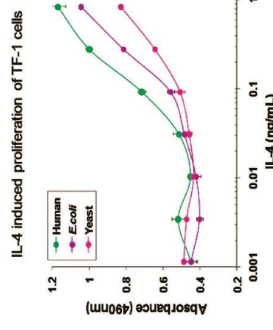
Cell differentiation – FGF basic protein (Active)

BMP-4, FGF-basic (ab9596), and VEGF (ab9571) were added to human embryonic stem cell cultures to direct differentiation.

These images show that CD31 (in green) and CD34 (in red) are abundant and represent primitive hematopoietic cells. DAPI staining is in blue.

Bioactivity of human expressed IL-4 (ab83686)

Assays were conducted to compare the bioactivity of human expressed proteins and their non-human expressed counterparts, such as *E.coli* expressed, or other mammalian expressed proteins.

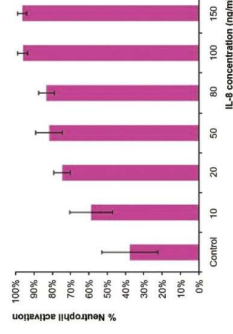


Cellular activation – IL-8 protein (ab49839)

IL8 (ab49839) activated neutrophils from whole human blood.

The cells expressed CD66b which was used to capture cells in microfluidic ChIP.

The activation was detected with a biotin-conjugated anti-human polyclonal antibody.



To find out more, please visit www.abcam.com/nav/proteins-and-peptides